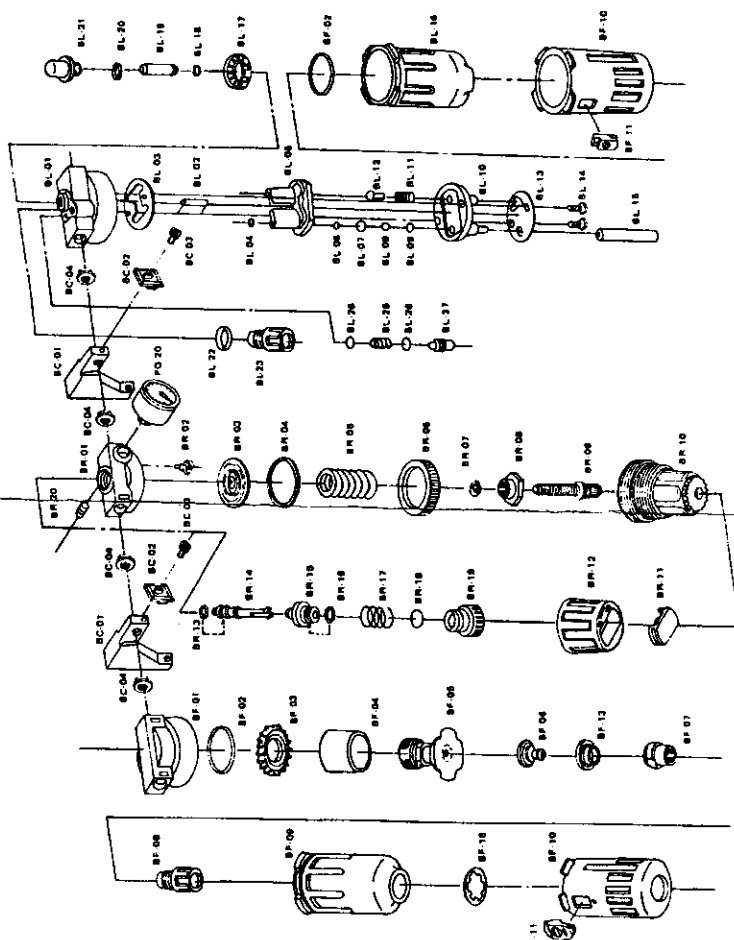


2615

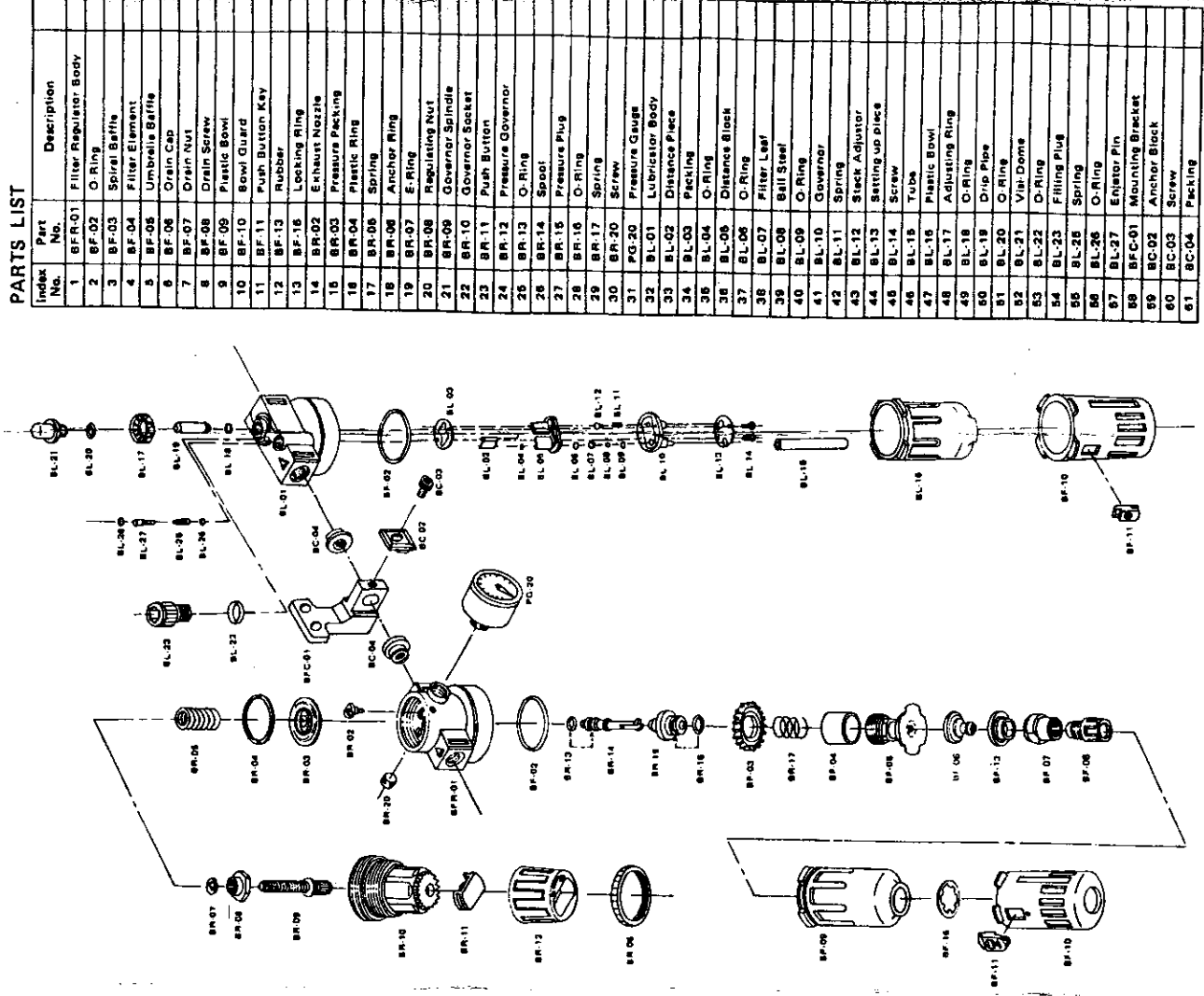
3/8" (1/4") AIR CONTROL UNIT



PARTS LIST

| Part No. | Description | Part No. | Description | Index No. | Part No. | Description | Index No. | Description |
|----------|------------------|----------|----------------------|-----------|----------|------------------|-----------|-------------|
| BF-01 | Filter Body | BR-10 | Governor Socket | 45 | BL-11 | Spring | 46 | BL-12 |
| BF-02 | O-Ring | BR-11 | Push Button | 47 | BL-13 | Slack Adjustor | 48 | BL-14 |
| BF-03 | Spiral Baffle | BR-12 | Pressure Governor | 49 | BL-15 | Tube | 50 | BL-16 |
| BF-04 | Filter Element | BR-13 | O-Ring | 51 | BL-17 | Adjusting Ring | 52 | BL-18 |
| BF-05 | Umbrella Baffle | BR-14 | Spool | 53 | BL-19 | Drip Pipe | 54 | BL-20 |
| BF-06 | Drain Cap | BR-15 | Spring Pressure Plug | 55 | BL-21 | Valve Cap | 56 | BL-22 |
| BF-07 | Drain Nut | BR-16 | O-Ring | 57 | BL-23 | Filling Plug | 58 | BL-24 |
| BF-08 | Drain Screw | BR-17 | Spring | 59 | BL-25 | Spring | 60 | BL-26 |
| BF-09 | Plastic Bowl | BR-18 | O-Ring | 61 | BL-27 | Exhaust Pin | 62 | BL-28 |
| BF-10 | Bowl Guard | BR-19 | O-Ring | 63 | BL-29 | Mounting Bracket | 64 | BL-30 |
| BF-11 | Push Button Key | BR-20 | Screw | 65 | BL-31 | Anchor Block | 66 | BL-32 |
| BF-12 | Rubber | PG-01 | Pressure Gauge | 67 | BL-33 | Filter Leaf | 68 | BL-34 |
| BF-13 | Locking Ring | BL-01 | Distance Piece | 69 | BL-35 | Ball Steel | 70 | BL-36 |
| BF-14 | Regulator Body | BL-02 | O-Ring | 71 | BL-37 | O-Ring | 72 | BL-38 |
| BF-15 | Exhaust Nozzle | BL-03 | Packing | 73 | BL-39 | Adjusting Ring | 74 | BL-40 |
| BF-16 | Pressure Packing | BL-04 | O-Ring | 75 | BL-41 | Drip Pipe | 76 | BL-42 |
| BF-17 | Plastic Ring | BL-05 | O-Ring | 77 | BL-43 | O-Ring | 78 | BL-44 |
| BF-18 | Anchor Ring | BL-06 | O-Ring | 79 | BL-45 | Valve Dome | 80 | BL-46 |
| BF-19 | E-Ring | BL-07 | Filter Leaf | 81 | BL-47 | O-Ring | 82 | BL-48 |
| BF-20 | Regulating Nut | BL-08 | Ball Steel | 83 | BL-49 | Filling Plug | 84 | BL-50 |
| BF-21 | Governor Spindle | BL-09 | O-Ring | 85 | BL-51 | Spring | 86 | BL-52 |
| | | BL-10 | Governor | 87 | BL-53 | Slack Adjustor | 88 | BL-54 |

3/8" (1/4") PIGGYBACK AIR CONTROL UNIT



PARTS LIST

| Index No. | Part No. | Description |
|-----------|----------|-----------------------|
| 1 | BF-01 | Filter Regulator Body |
| 2 | BF-02 | O-Ring |
| 3 | BF-03 | Spiral Baffle |
| 4 | BF-04 | Filter Element |
| 5 | BF-05 | Umbrella Baffle |
| 6 | BF-06 | Drain Cap |
| 7 | BF-07 | Drain Nut |
| 8 | BF-08 | Drain Screw |
| 9 | BF-09 | Plastic Bowl |
| 10 | BF-10 | Bowl Guard |
| 11 | BF-11 | Push Button Key |
| 12 | BF-12 | Rubber |
| 13 | BF-13 | Locking Ring |
| 14 | BF-14 | Exhaust Nozzle |
| 15 | BF-15 | Pressure Packing |
| 16 | BF-16 | Plastic Ring |
| 17 | BF-17 | Spring |
| 18 | BF-18 | Anchor Ring |
| 19 | BF-19 | E-Ring |
| 20 | BF-20 | Regulating Nut |
| 21 | BF-21 | Governor Spindle |
| 22 | BF-22 | Governor Socket |
| 23 | BF-23 | Push Button |
| 24 | BF-24 | Pressure Governor |
| 25 | BF-25 | O-Ring |
| 26 | BF-26 | Spool |
| 27 | BF-27 | Pressure Plug |
| 28 | BF-28 | O-Ring |
| 29 | BF-29 | Spring |
| 30 | BF-30 | Screw |
| 31 | BF-31 | Pressure Gauge |
| 32 | BF-32 | Lubricator Body |
| 33 | BF-33 | Distance Piece |
| 34 | BF-34 | Packing |
| 35 | BF-35 | O-Ring |
| 36 | BF-36 | Distance Block |
| 37 | BF-37 | O-Ring |
| 38 | BF-38 | Filter Leaf |
| 39 | BF-39 | Ball Steel |
| 40 | BF-40 | O-Ring |
| 41 | BF-41 | Governor |
| 42 | BF-42 | Spring |
| 43 | BF-43 | Slack Adjustor |
| 44 | BF-44 | Setting up piece |
| 45 | BF-45 | Screw |
| 46 | BF-46 | Tube |
| 47 | BF-47 | Plastic Bowl |
| 48 | BF-48 | Adjusting Ring |
| 49 | BF-49 | O-Ring |
| 50 | BF-50 | Drip Pipe |
| 51 | BF-51 | O-Ring |
| 52 | BF-52 | Valve Dome |
| 53 | BF-53 | Filling Plug |
| 54 | BF-54 | Spring |
| 55 | BF-55 | Slack Adjustor |
| 56 | BF-56 | Spring |
| 57 | BF-57 | O-Ring |
| 58 | BF-58 | Exhaust Pin |
| 59 | BF-59 | Mounting Bracket |
| 60 | BF-60 | Anchor Block |
| 61 | BF-61 | Screw |
| 62 | BF-62 | Packing |